



# Sunseeker Predator 52

£359,950 • Essex United Kingdom (UK) • Used • 2009

## Presented by

Peter Marchant  
Phone: 44(0)1206302003

**Morgan Marine**  
The Boatyard, Shipyard  
Estate  
CO7 0AR Colchester  
United Kingdom (UK)

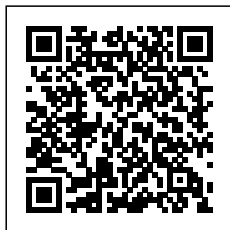


## Details

Make:	Sunseeker
Model:	Predator 52
Year:	2009
Condition:	Used
Engine type:	
Fuel type:	Diesel
Length:	17.6 m (57.74 ft)
Beam:	4.63 m (15.19 ft)
Cabins:	0
Berths:	0



Morgan Marine



7zea.com

# Description

EN

This beautiful 2009 Sunseeker Predator 52 Juno is a superb example of one of Sunseeker's most popular sports cruisers. A local boat with a brilliant service history, she has been well cared for and much loved by her current owner. Powered by twin MAN R6-800 shaft drive engines with Approx 998 hours, she offers strong performance along with smooth and reliable handling. With cruising speed of 25 knots and top speeds of 32 knots! Her exterior has been professionally wrapped in satin black, giving the yacht a sleek and modern look that complements the Predator's iconic styling. The cockpit and exterior areas are well equipped for entertaining and relaxation, featuring a hydraulic teak swim platform, hydraulic Passarella, telescopic gangway, electric hard top roof, and a large stern double-door garage for storage with deck chocks. Underwater lights and generous bow and stern sunbed loungers create the perfect setting for enjoying time on the water. Navigation is handled by twin Raymarine Axiom chart plotters with GPS, Raymarine autopilot, and an integrated camera system displayed through the chart plotters for easier manoeuvring. Below deck, the yacht offers comfortable accommodation with three cabins including two doubles and a twin bunk cabin, along with separate crew quarters with bunks. The spacious saloon features U-shaped leather seating, while the large galley includes a double fridge. Toilet compartment with a wrap around shower. Comfort on board is enhanced by reverse-cycle air conditioning and heating throughout, powered by an upgraded 11kW generator. A Bose 321 surround sound system and LED mood and courtesy lighting complete the interior atmosphere. This well-presented Predator 52 combines style, performance and comfort, and is ready to be enjoyed by her next owner. Contact Morgan Marine today for early viewing!

Deck: GRP hull - hull wrapped in Satin Black. Re-antifouled in March 2026. Hydraulic high / low teak swim platform with boarding ladder. Hydraulic Passarella. Hydraulic telescopic gangway. Stainless Steel with teak walkway. Electric hard top roof. Fenders with fender socks (with boat name) and mooring lines. 8x Mooring cleats in Stainless Steel. Stainless Steel guard rails. Stainless Steel grab handles. Electric canopy for aft cockpit. Rear camper with windows in black. Rear canopy for winter. Electric windlass with Delta anchor, 60m chain and rope control at bow and helm. Bow roller. Anchor locker. Large stern double door garage for storage. Tender deck chocks. Bow sun bed removable cushions with cover. Heavy duty winter cover. Hot and cold cockpit shower.

Cabin: Steps down into cabin area - Forward double berth with mattress, drawers underneath, over head lockers, hanging storage with mirror, hatch to deck, TV and lots of storage and lighting. Forward ensuite shower room and toilet with wash basin, toilet, separate wrap round shower, mirrored cupboard, towel rail and storage. Aft master very large cabin with double berth with mattress, drawers underneath, storage lockers, vanity units, mirrors and hanging storage. Aft Master ensuite toilet compartment with sink, electric toilet with holding tank, storage, mirror, stand up wrap around shower, towel rail and port window. Hot and cold water. Toilet drop down blind. Port side cabin with twin bunk beds with mattress, TV, storage and good amount of lighting. Drop down blinds in all cabins. All portholes have mosquito fly screens. Wooden saloon flooring. Carpets in all berth areas. Crew cabin with single berth, lots of storage, toilet with holding tank, washing machine with dryer. Large galley area on lower deck with electric hob with extractor fan, cooker, sink, dishwasher, large amount of storage cupboards and large double fridge.

Cockpit: Port and starboard teak cockpit steps up to cockpit area from swim platform. Teak cockpit with cockpit bench seats with cushions in Sunbrella Charcoal with cover. Stern sun bather with cushions in Sunbrella Charcoal. Teak cockpit table.

Corner cockpit wet bar galley with 24v fridge, sink, ice maker, electric fluted griddle and storage. Transom safety doors. Wrap around windscreen with twin electric window wipers. Starboard side pilot bench style leather seating with dash and engine controls on upper deck in saloon. Port side co-pilot seat with backrest and rail. Large engine compartment with step down ladder. Radar arch. In lower cockpit section - Large saloon U-shaped leather cushioned seating with electric Satin Cherry table. Director chairs. Saloon TV on rise and fall system. Drinks cabinet. Cockpit drop down blinds.

Electronics: Twin upgraded 2024 12 inch Raymarine Axiom chart plotters with GPS. Raymarine depth instrument. Raymarine down scan transducer. Raymarine autopilot. Raymarine AIS. Raymarine radar. Camera system built into chart plotters. Underwater lights. Bose 321 surround system with speakers. Navigation lights. Anchor light. Compass. Overhead and low-level mood courtesy lighting LED. Full analogue engine gauges. De mister. USB 12v socket. Interior lights. Control switch panel. Stern 'Juno' name lights up. Remote spotlight. Shore power with 12v and 24v battery charger. Electric pilot and co pilot windscreens.

Machinery: Twin Man R6-800 Shaft drive propulsion engines. Engine serviced in March 2026. Hydraulic steering. Upgraded generator 11KW 50HZ. Reverse cycle Air conditioning system plus heating to all cabins, saloon and galley. Hydraulic trim tabs. Stern and bow thruster with remote control. Fuel capacity - 2140 litres. Aluminium fuel tanks with electric sender units - Professionally cleaned in 2025 with 5x hatches installed both sides for easy access for maintenance. Freshwater capacity - 625 litres. Manual and automatic bilge pumps. 1x Automatic floor pump. Bilge high level alarm.

## General information

Make:	Sunseeker
Model:	Predator 52
Year:	2009
Condition:	Used

## Engine

Engine type:	
Fuel type:	Diesel

## Measurements

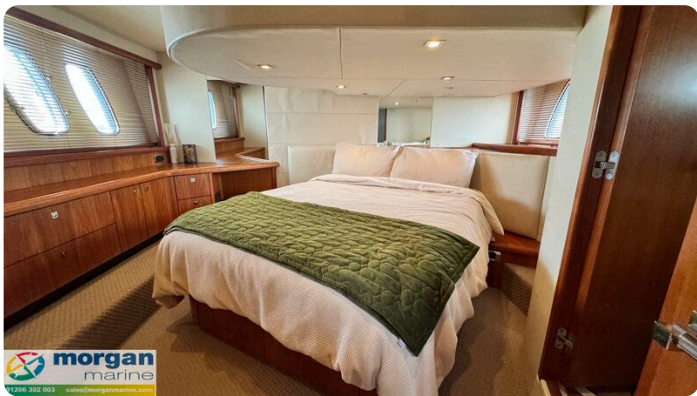
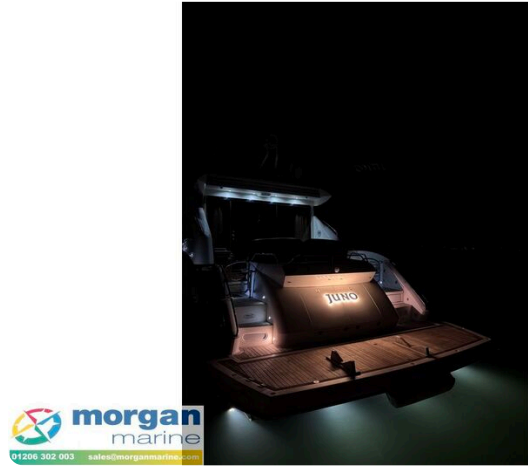
Length:	17.6 m (57.74 ft)
Beam:	4.63 m (15.19 ft)
Deep:	1.26 m (4.13 ft)

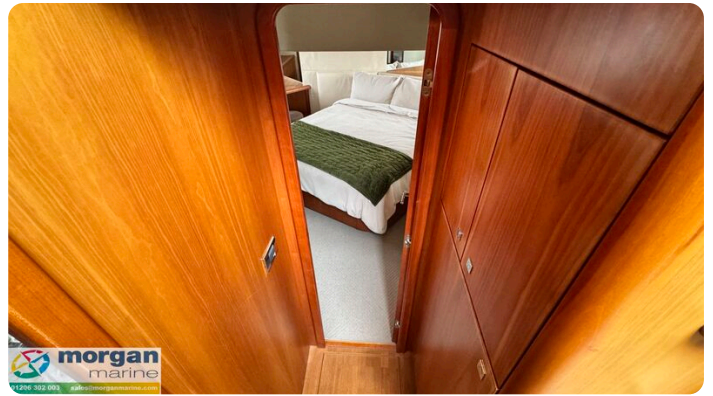
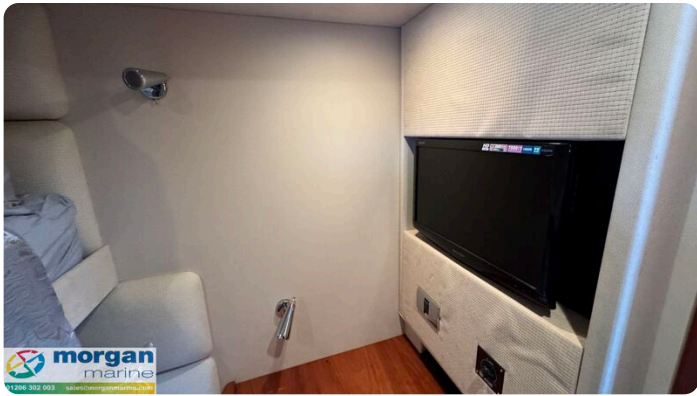
## Accommodation

Cabins:	0
Berths:	0

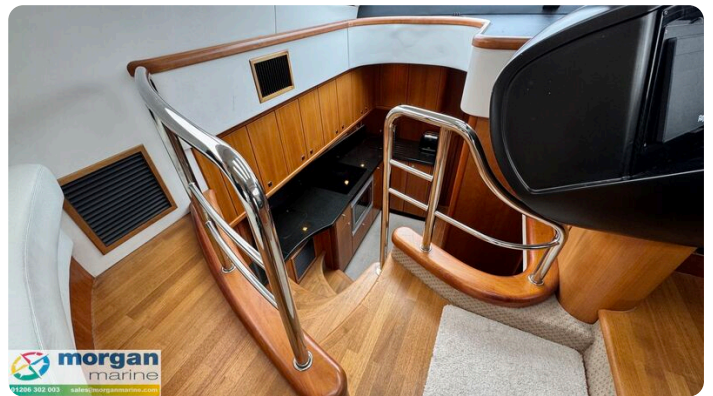
## Images







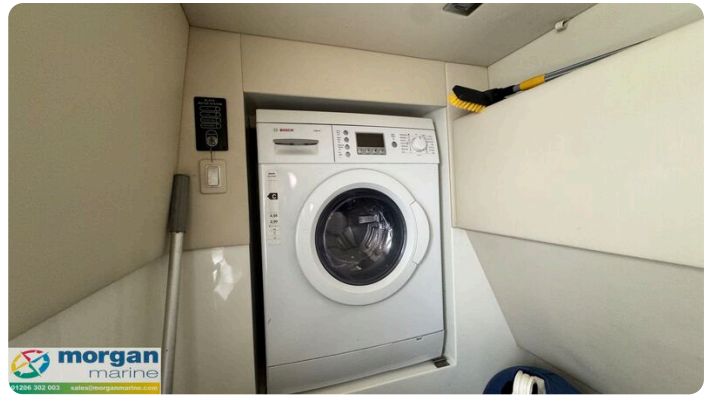
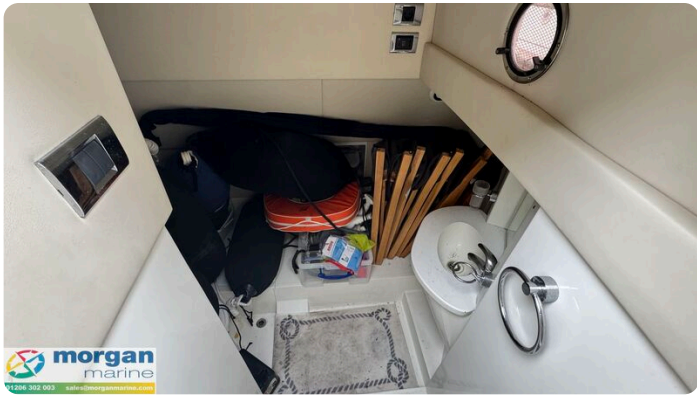


















**Morgan Marine**

The Boatyard, Shipyard Estate  
CO7 0AR Colchester  
United Kingdom (UK)

Phone: 44(0)1206302003

<https://morganmarine.com>

