



# Princess V48

€670,500 • North Jutland Denmark • Used • 2014

## Presented by

Justin Garwell  
Phone: +44 (0) 1305 766504

### JD YACHTS LIMITED

80 THE ESPLANADE  
DT4 7AA WEYMOUTH  
United Kingdom (UK)



## Details

Make:	Princess
Model:	V48
Year:	2014
Condition:	Used
Engine:	Volvo IPS 600, 435 hp
Engine type:	
Fuel type:	Diesel
Length:	15.58 m (51.12 ft)
Beam:	4.11 m (13.48 ft)
Cabins:	0
Berths:	0



JD YACHTS  
LIMITED



7zea.com

# Description

ENG 2014. 2 x 435 HP Volvo IPS 600 4 berths in 2 cabins Lying: North Jutland Denmark	Overhead and low level courtesy lights Tonneau cover Stainless-steel grabrails Transom hatch to stern lazarette Access hatch to engine room 220/240v shore support inlet in locker Life raft locker Transom platform with integrated swimming ladder (with optional electro-hydraulic raise/lower mechanism) Twin transom doors Hot and cold shower Locker for 2 gas bottles Storage lockers
ENG Extras	Helm Position
Eberspacher M10 Heating System Throughout Onan 11kw Generator Hi-Lo Bathing Platform IPS Joystick Control Side-Power Bow Thruster Teak Laid Bathing Platform Teak Laid Cockpit Raymarine HybridTouch 15.4" Colour Multifunction Display Raymarine Autopilot Cockpit Sun Awning with complete Full Height Cockpit Cover Upper Saloon - LED TV on Rise & Fall System Lower Saloon - 28" LED TV Owners Stateroom - 28" LED TV Forward Guest Cabin - 22" LED TV Scissor Berths in Guest Cabin Combi Oven Dishwasher Cockpit Wetbar with Grill	Helm seat with sit/stand facility Full engine instrumentation Fuel gauges Single-lever engine controls Joystick maneuvering control Rudder position indicator Power-assisted steering system and adjustable steering wheel Remote control anchor winch Trim tab controls with indicators VHF with DSC R/T Speed and distance log Echo sounder with alarm Remote control searchlight High speed compass Horn button Chart area Twin windscreen wipers Windscreen freshwater pressure wash Bilge pump controls with visual <input type="checkbox"/> pump running <input type="checkbox"/> indicator (3) Electric side window
Standard Specification	Upper Saloon
Standard Equipment	U-shaped sofa Dining table Cocktail cabinet Refrigerator Overhead downlighters Electric opening roof Triple stainless-steel framed sliding doors to cockpit Radio/CD/MP3 with saloon and cockpit speakers Timber-laid flooring
Power-assisted steering system Volvo joystick manoeuvring control 24v DC/240v AC electrical system 240v shore power with 40-amp float battery charger Remote control electric anchor winch Electro-hydraulic trim tabs VHF with DSC R/T Speed and distance log Echo sounder with alarm Remote control searchlight Combination microwave/conventional oven/grill Refrigerator with deep freeze compartment Electric quietflush toilets Saloon and cockpit stereo CD/radio Teak-laid transom platform/cockpit deck/stairs to side decks	Lower Saloon
Deck Fittings	L-shaped sofa Table Storage lockers Overhead downlighters Main electrical control panel with battery isolation switches Opening portlights (2)
Reversible electric anchor winch with foredeck and helm position controls Self-stowing 20kg/44lb Delta anchor with 40m chain Stemhead roller with automatic anchor launch and retrieve Stainless-steel bow, stern and spring cleats Stainless-steel pulpit and guard rails Stainless-steel coachroof handrails Foredeck hatch with integrated skylight PVC rubbing band with stainless-steel insert Full set of IMCO navigation lights Riding light Remote control searchlight Twin electric horns Fuel and water fillers	Galley
Cockpit	Avonite (or similar) worktop 3 zone gas hob with flame failure device (optional 3 ring ceramic hob) Stainless-steel sink with Monobloc mixer tap Combination microwave/conventional oven with grill Refrigerator with freezer compartment Waste bin Storage cupboards, drawers and lockers Timber-laid flooring Under floor storage bin Opening portlights
Self-draining U-shaped seating/dining area Teak table	

#### Owners Stateroom

Large double bed with drawers below  
Wardrobe with shelves  
Drawers and storage lockers  
Overhead and individual berth lights  
Sofa  
Dressing table  
Panoramic trapezoidal windows in toughened glass with opening ports  
En-suite bathroom:  
Avonite worktop  
Wash basin with Monobloc mixer tap  
Separate stall shower with extractor  
Mirror  
Storage locker  
Opening portlight

#### Forward Guest Cabin

Large double bed with drawers below (option of scissor berths)  
Wardrobe  
Deck hatch with integrated fly screen and blind  
Storage lockers  
Downlighters and individual berth lights  
Trapezoidal side windows with opening ports  
En-suite bathroom:  
Wash basin with Monobloc mixer tap  
Separate stall shower with extractor  
Mirror  
Storage locker  
Opening portlight

#### Power And Drive Systems

Twin Volvo IPS-600  
Power-assisted steering  
Electronic engine controls  
Joystick manoeuvring system  
Volvo active corrosion protection system  
Engine room extractor fans with electronic time delay  
Trim tabs with indicators  
Engine room lighting

#### Electrical Systems

24 Volt:  
4 x heavy-duty batteries for engine starting  
4 x heavy-duty auxiliary batteries  
Engine alternators charge via split charge relays to isolate engine start batteries from auxiliaries  
40-amp 24v float battery charger  
Battery paralleling system (for engine start back-up)  
Remote battery master switches with control switch at main panel  
Circuit breakers on all circuits  
220/240 Volt:  
Shore support inlet (32A)  
Power points in owner's stateroom, forward guest cabin, galley (double), lower and upper saloon  
Polarity check system  
Earth leakage safety trip  
Shaver points in both bathrooms

#### Fuel System

Twin fuel tanks (in NS8 marine grade alloy) with interconnection system giving 265 gallons/318 US gallons/1,200 litres capacity  
Fuel fillers on both side decks  
High-capacity fuel filter/water trap  
Remote fuel cocks in cockpit locker  
Fuel gauges on helm console

#### Water System

Water capacity totalling 80 gallons/96 US gallons/364 litres including 11 gallon/13 US gallon/50 litres hot water calorifier  
Water heated by engine and 240v immersion heater  
Automatic water pump with filter  
Main circuit breaker at switch panel  
Water level gauge  
Deck filler

#### Fire Extinguishers

Automatic fire extinguisher in engine room and generator space

#### Bilge Pumps

Automatic electric bilge pumps with manual override (3 in all)  
High-capacity manual bilge pump with valve system and suction points in engine room and accommodation space

### General information

Make:	Princess
Model:	V48
Year:	2014
Condition:	Used

### Engine

Engine:	Volvo IPS 600, 435 hp
Engine type:	
Fuel type:	Diesel

### Measurements

Length:	15.58 m (51.12 ft)
Beam:	4.11 m (13.48 ft)
Deep:	1.14 m (3.74 ft)
Weight:	14300 ( )

### Accommodation

Cabins:	0
Berths:	0





Image courtesy of JD Yachts



Image courtesy of JD Yachts



Image courtesy of JD Yachts



Image courtesy of JD Yachts



Image courtesy of JD Yachts



Image courtesy of JD Yachts





Image courtesy of JD Yachts



Image courtesy of JD Yachts



Image courtesy of JD Yachts



Image courtesy of JD Yachts



Image courtesy of JD Yachts



Image courtesy of JD Yachts





Image courtesy of JD Yachts



Image courtesy of JD Yachts



Image courtesy of JD Yachts



Image courtesy of JD Yachts



Image courtesy of JD Yachts



Image courtesy of JD Yachts





Image courtesy of JD Yachts



Image courtesy of JD Yachts



Image courtesy of JD Yachts



Image courtesy of JD Yachts

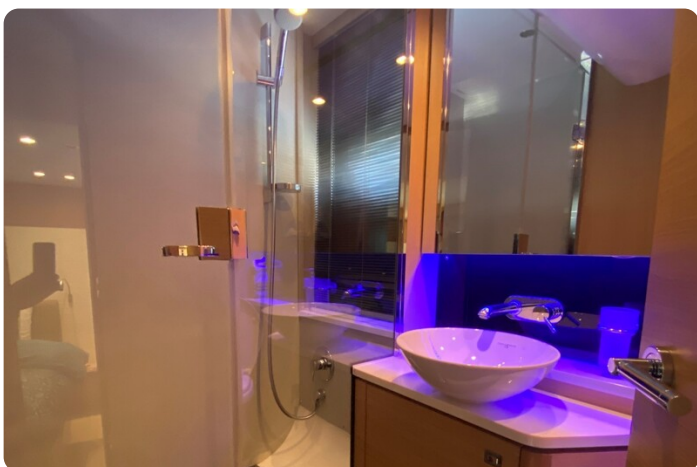


Image courtesy of JD Yachts



Image courtesy of JD Yachts





Image courtesy of JD Yachts



Image courtesy of JD Yachts



Image courtesy of JD Yachts



Image courtesy of JD Yachts



Image courtesy of JD Yachts



Image courtesy of JD Yachts



**JD YACHTS LIMITED**

80 THE ESPLANADE

DT4 7AA WEYMOUTH

United Kingdom (UK)

Phone: +44 (0) 1305 766504

<http://jdyachts.com>



 YACHTS.