



Pacific Prestige 200

€650,000 • Brindisi Netherlands • Used • 2008

Presented by

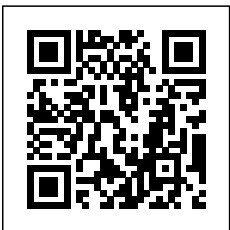
Bram de Groot
Phone: 0031(0)478450015

GrandYachts BV
Geijsterseweg 10
5861 BL Wanssum
Netherlands

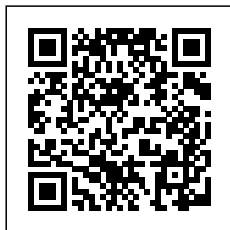
GRANDYACHTS®

Details

Make:	Pacific
Model:	Prestige 200
Year:	2008
Condition:	Used
Hull:	Steel
Engine:	Volvo Penta D9-425 2008
Engine type:	Inboard engine
Fuel type:	Diesel
Fuel tank:	5500 l (1,452.95 gal)
Length:	20.4 m (66.93 ft)
Beam:	5.5 m (18.04 ft)
Cabins:	0
Berths:	3
Watertank:	1500 l (396.26 gal)



GrandYachts BV



7zea.com

Description

Offered by the **Official Pacific Yachts dealer**. Comes factory approved!

This **Pacific Prestige 200** is built to an extreme level of quality and is best described as a true passage maker.

She is equipped with the Volvo **D9-425** leaving plenty power for the high power PTO's that is used by the hydraulic bow and stern thrusters. The 425 is a down rated 500 and thus a lifetime of over 50.000 hours is expected!

She sleeps 6 in two double staterooms, both with ensuite central heated bathrooms with shower, wash basins and toilets. Her third guestroom on starboard side is also equipped with an en-suite bathroom.

Wheelhouse

The fully air-conditioned wheelhouse gives you comfort during your new ocean adventures, her thermic-line double glazing withstands the most extreme conditions and a central fresh air dorade box ventilation system provides fresh air in all compartments when all glazing and portholes have to be closed. A large chart-table with twin lighted gooseneck lights and ample space for laptops is found at the helm station.

Behind the double Recaro helm seats is ample space for six and on starboard side you find a full length cabinet that houses a sink, fridge, electric up and down LED-tv, the Bose sound system and other entertainment features.

Main features

- Hydraulic up / down bathing platform
- Jacuzzi on foredeck with TV
- Volvo Penta D9-425 with twin hydraulic PTO's
- Only 2110 hours!
- Heavy Duty 24V alternators
- Vetus hydraulic stabilising system
- Mastervolt 16kw 1500rpm generator with own battery
- Mastervolt Mass battery charger 24V/100Ah
- Mastervolt Mass Sine inverter 24V>230V / 5000 watt
- Mastervolt Galvanic isolator
- Mastervolt GEL batteries
- Reverse cycle airconditioners
- Kabola 17Kw central heating with hot water tap.
- Insulated hull and superstructure
- Maintenance free water lubricated propeller shafts.
- Hydraulic proportional bow(300kgf) and stern(300kgf) thruster
- Hydraulic Titan anchor winch
- Stainless steel anchor chain 13mm, length 80m
- Polished stainless steel anchor
- Tracvision G4 Sat-receiver with decoder
- Full Raymarine navigation equipment
- Raymarine C120 Chart plotter
- Raymarine C1200 Pathfinder 5s open scanner 122cm Radar
- Raymarine ST6001 autopilot with Smartpilot S3G corepack
- Raymarine ST60+ Rudder indicator
- Raymarine ST60+ Compass
- Raymarine ST60+ Wind speed/direction
- Raymarine ST60+ TriData speed/depth/temp
- Raymarine Ray218E VHF
- Raymarine Loudhailer
- 3 x Raymarine camera's
- Plastimo Offshore compass
- Idromar watermaker
- Jabsco electric 360 searchlight
- Horn (air compressed)
- Bose sound system in wheelhouse

- Bose sound system in living
- Wine cooler in living
- Recaro Maritime captain seats (electric)
- Exalto synchronized wiper controls with interval and wash installation
- Power steering
- Volvo EVC electronic gearshift / throttle
- Full digital engine instrument package
- Aquadrive silent drives
- Deck wash installation
- Built under CE-A class (sea-going)

Galley / dinette

The galley and dinette area is equipped to a very high level of comfort, central is her large U-shaped seating with dining table. A king size galley with 4 zone Bosch HOB, Bosch fridge, Bosch dishwasher, Bosch Oven/grill/microwave, Philips coffee machine and plenty cutlery/crockery storage. The galley is finished with a beautiful black and silver spotted top.

Plenty cupboards and other spaces house all needed equipment for a perfect live aboard. SAT-TV, DVD, DVB-T TV and a Bose sound system completes the entertainment.

Master stateroom

In the bow over her full beam you find the central heated and air-conditioned master stateroom with king-size French bed and an ensuite bathroom, with shower, double design wash basins and an oversized shower with hardened glass entrance doors, toilet and chrome towel radiator. Furthermore in her master stateroom you find a make-up table, length mirror, large wardrobes, seats on both sides and a large flat-tv with SAT reception. Modern rear view extra-large hatches complete her well designed owner's cabin.

Guest staterooms

In the aft you find the ample sized central heated and air-conditioned guest stateroom with a French double bed, a bathroom, with shower, wash basin, shower with glass door and a chrome towel radiator. A separate toilet with wash basin is found on the other side of the central bow corridor that also houses a washing machine and dryer.

Crew cabin:

Accessible from her stern you find the fully loaded crew cabin with twin beds and a full head.

Corridor

In the large corridor between the galley and the aft stateroom you find invisible integrated cupboards that houses the yachts electric panelling and the double engine room entrances. Furthermore you find access to the double guestroom and the large bathroom.

Engine rooms

Her true masterpiece is without doubt her double engine room, engineered to perfection in every form! The engineering of Pacific yachts shows very clean and well installed high quality equipment. A very large hydraulic PTO was installed to give hydraulic power to all features. Inside her engine room you find features like the HR Kabola central heating with hot water tap function, double Separ filters with cross-overs, heavy duty pumps, the hydraulic stabilizers, chiller systems and many more. One extra feature well worth mentioning is her as new 1500rpm generator with exhaust and water separator. The gen-set delivers 16 kilowatts of power without any noise both

inside and outside.

Tanks:

- Fuel: 5000 litres
- Water: 1500 litres
- Waste water: 600 litres

Materials

The Pacific Prestige 200 was built out of special treated plasma cut steel.

- Keel 8mm
- Hull 6mm
- Superstructure 4mm,
- Solid teak decks 15mm.
- Sound and thermic insulation 80mm
- Paint: AwlGrip high gloss 2 component
- Railings: Stainless steel 316 polished
- Rubbing strikes: Stainless steel 316 polished
- Fender holders: Stainless steel 316 polished
- Glazing: Gebo Thermic Line double marine glazing

Dimensions:

- Length:20.40m
- Beam: 5.50m
- Draft: 1.65m
- Weight: 55 tons

Paint system:

Currently this Prestige is changed to the new beige colour on her hull.

Viewing is highly recommended.

Disclaimer

GrandYachts offers the details of this vessel in good faith but cannot guarantee or warrant the accuracy of this information nor warrant the condition of the vessel. A buyer should instruct his agents, or his surveyors, to investigate such details as the buyer desires validated. This vessel is offered subject to prior sale, price change, or withdrawal without notice.

General information

Make:	Pacific
Model:	Prestige 200
Year:	2008
Condition:	Used
Hull:	Steel

Engine

Engine:	Volvo Penta D9-425 2008
Engine type:	Inboard engine
Fuel type:	Diesel
Fuel tank:	5500 l (1,452.95 gal)

Measurements

Length:	20.4 m (66.93 ft)
Beam:	5.5 m (18.04 ft)
Deep:	1.65 m (5.41 ft)

Accommodation

Cabins:	0
Berths:	3
Watertank:	1500 l (396.26 gal)
Holdingtank:	600 l (158.50 gal)



Pacific Prestige 200



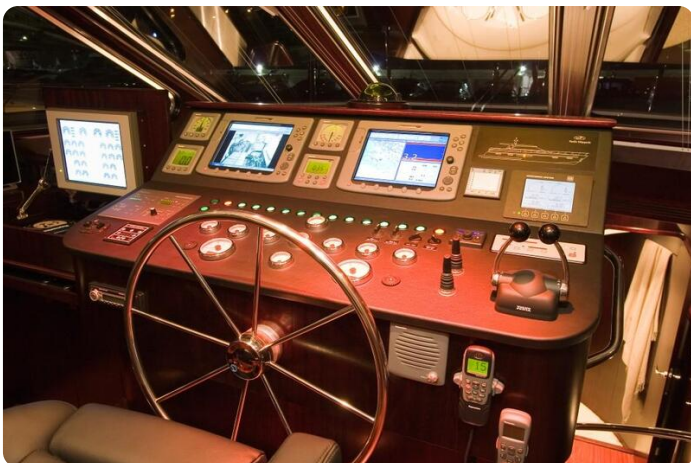
Pacific Prestige 200



Pacific Prestige 200



Pacific Prestige 200



Pacific Prestige 200



Pacific Prestige 200



Pacific Prestige 200



Pacific Prestige 200



Pacific Prestige 200



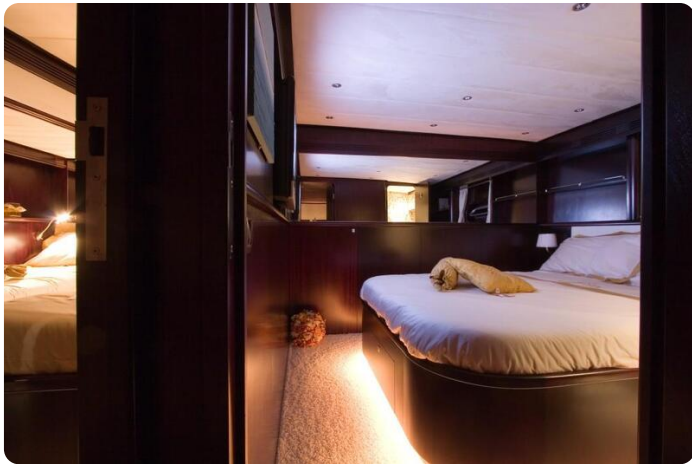
Pacific Prestige 200



Pacific Prestige 200



Pacific Prestige 200



Pacific Prestige 200



Pacific Prestige 200



Pacific Prestige 200



Pacific Prestige 200



Pacific Prestige 200



Pacific Prestige 200



Pacific Prestige 200

GrandYachts BV

Geijsterseweg 10
5861 BL Wanssum
Netherlands

Phone: 0031(0)478450015

<https://grandyachts.eu>



GRANDYACHTS®