



# Macgregor 26X

£9,995 • Brightlingsea United Kingdom (UK) • Used • 2000

## Presented by

Peter Marchant  
Phone: 44(0)1206302003

**Morgan Marine**  
The Boatyard, Shipyard  
Estate  
CO7 0AR Colchester  
United Kingdom (UK)



## Details

|              |                   |
|--------------|-------------------|
| Make:        | Macgregor         |
| Model:       | 26X               |
| Year:        | 2000              |
| Condition:   | Used              |
| Engine:      | , 300 hp          |
| Engine type: |                   |
| Fuel type:   | Gasoline          |
| Length:      | 7.87 m (25.82 ft) |
| Beam:        | 2.39 m (7.84 ft)  |
| Cabins:      | 0                 |
| Berths:      | 0                 |



Morgan Marine



7zea.com

## Description

EN

Now available at Morgan Marine – 2000 MacGregor 26X, a distinctive and much-loved trailerable sailing yacht that’s equally at home cruising inland waterways or venturing out to sea. Powered by a dependable Yamaha F50 outboard, this versatile sail/motor cruiser offers the perfect blend of sailing excitement and powered convenience. Presented in good condition, the boat comes complete with a lightweight, easy-to-tow two-wheel trailer - perfect for our Park & Ride service and also making transport and launch hassle-free. Onboard, you’ll find accommodation for up to six berths, a functional galley area, a dedicated toilet compartment (toilet not fitted), and a full complement of sails and rigging, so you’re ready to hit the water straight away. Renowned for their innovative water ballast system, lightweight build, and ease of handling, MacGregor yachts offer an ideal entry into the sailing lifestyle or a flexible option for experienced boaters. Don’t miss your chance to view this fantastic all-rounder – contact Morgan Marine today to arrange a viewing.

Cabin: Forward V shaped double berth with hatch to deck. Stern double berth section. Saloon area with port side cushioned bench seating. Saloon starboard side table with backrest cushioned seating. Galley area with sink, twin gas burner and lots of storage. Toilet compartment with sink and storage (no toilet fitted).

Cockpit: Cockpit steering wheel with engine throttle control. Cockpit lockers. Sliding hatch to saloon/ cabin area.

Electronics: Garmin GPSmap 451s chart plotter. Garmin GPS 128. Silva Star sea instrument display. Icom VHF radio. Plastimo compass. Navigation lights. Cabin lights. Running lights.

Machinery: Yamaha 50hp outboard with electric start and power trim and tilt.

Trailer: 2 Wheel roller trailer with jockey wheel, spare wheel, winch and hitch. NB - the road trailer may not be in serviceable road worthy condition. It is recommended the buyer should inspect and service accordingly prior to use on public roads.

### General information

|            |           |
|------------|-----------|
| Make:      | Macgregor |
| Model:     | 26X       |
| Year:      | 2000      |
| Condition: | Used      |

### Engine

|              |          |
|--------------|----------|
| Engine:      | , 300 hp |
| Engine type: |          |
| Fuel type:   | Gasoline |

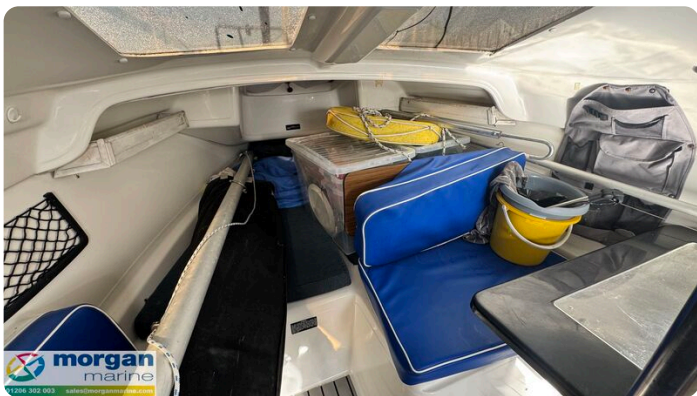
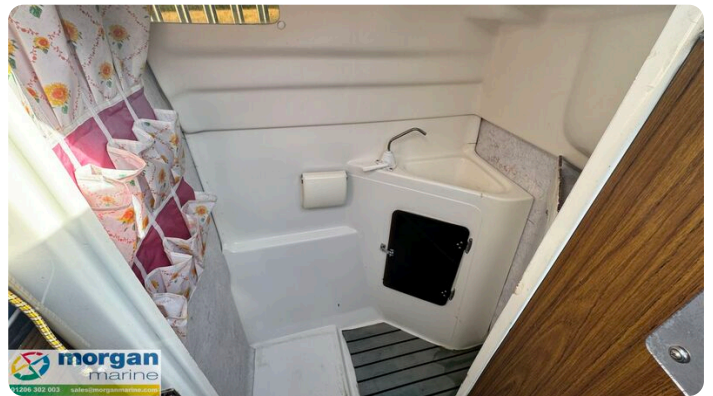
### Measurements

|         |                   |
|---------|-------------------|
| Length: | 7.87 m (25.82 ft) |
| Beam:   | 2.39 m (7.84 ft)  |
| Deep:   | 3.36 m (11.02 ft) |
| Weight: | 0 ()              |

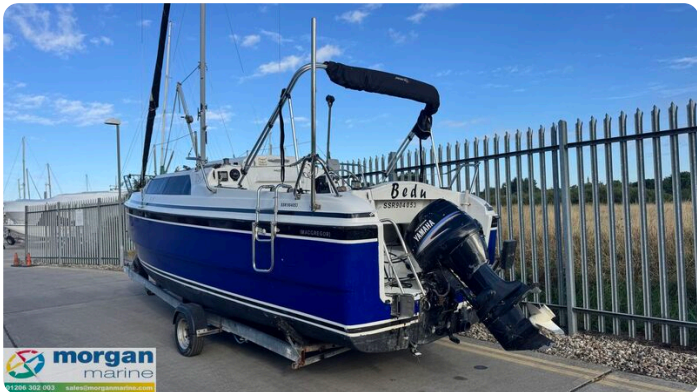
### Accommodation

|         |   |
|---------|---|
| Cabins: | 0 |
| Berths: | 0 |

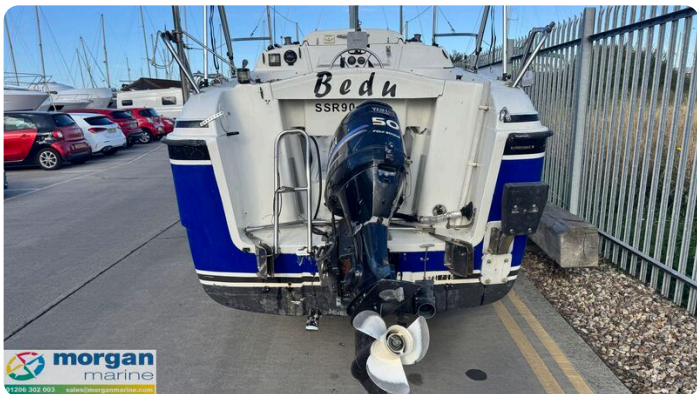




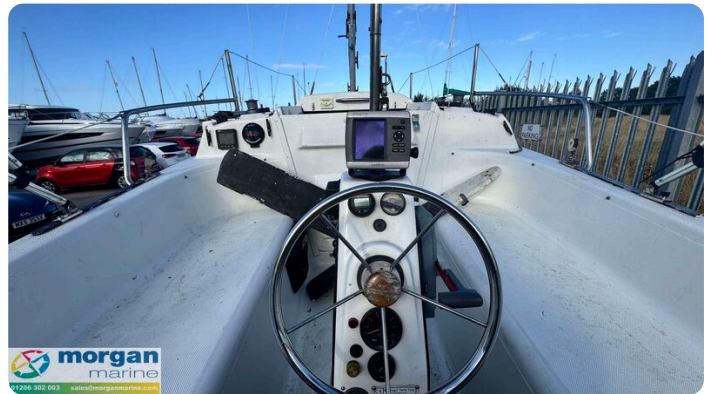
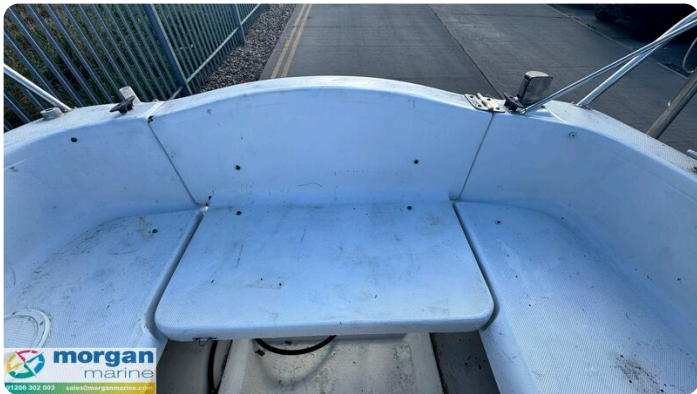














**Morgan Marine**

The Boatyard, Shipyard Estate  
CO7 0AR Colchester  
United Kingdom (UK)

Phone: 44(0)1206302003

<https://morganmarine.com>

