



Macgregor 26M

£17,995 • Essex United Kingdom (UK) • Used • 2004

Presented by

Peter Marchant
Phone: 44(0)1206302003

Morgan Marine
The Boatyard, Shipyard
Estate
CO7 0AR Colchester
United Kingdom (UK)



Details

Make:	Macgregor
Model:	26M
Year:	2004
Condition:	Used
Engine type:	
Fuel type:	Gasoline
Length:	7.85 m (25.75 ft)
Beam:	2.36 m (7.74 ft)
Cabins:	0
Berths:	0



Morgan Marine



7zea.com

Description

EN

Set sail with this 2004 MacGregor 26M, a unique and much-loved trailerable sailing yacht that's as comfortable cruising inland waters as it is exploring the open sea. Powered by a reliable Yamaha F50 outboard, this sail/motor cruiser combines the best of both worlds - the thrill of sailing and the convenience of motorised travel. Lovingly maintained and in good condition, this MacGregor 26M includes: Admiral 2-Wheel Trailer - Easy to tow and launch, making it perfect for weekend getaways or extended adventures, 4 comfortable Berths, galley area, sea toilet, sails and rigging system. This MacGregor is a standout in its class - known for its lightweight, water ballast system, and ease of handling. Whether you're a seasoned sailor or just starting out, this is the perfect boat for unforgettable memories on the water. Contact Morgan Marine today for early viewings - This is a highly specified example that won't be around long!!

Deck: Mast raising system. Furling system. Mainsail fully battened crusader sails of approx 2019. Jib crusader sails approx 2006. Gennaker with sheets and blocks approx 2007/8. Original mainsail Macgregor, battens stitched in. Original Jib Macgregor with sun strip. Anchor, Fortress plus 5m chain + 30m wrap and terminal fittings in anchor locker. 4x Fenders, 4x lines (2x short, 2 long). Genoa car x2. Sail bags x 5. 2:1 lines and blocks for centreplate and rudders. Reefing system for main sail. Mainsail cover. Spinnaker halyard and block. Twin clutches and main halyard plus track block with twin pulley block, single blocks x2 and long shackle. Masthead and Crosstree burgee halyards. Ensign pole and bracket. Life ring and Lifebuoy light. Whisper pole. 2 ton ratchet strap. Floating winch handle and original non locking spare. Winch handle pocket. Whisper pole. Modified Bluewater Yachts steering and quick release bar 2005. Stainless steel pulpit and pushpit with guardrails.

Cabin: Forward V shaped double berth with hatch to deck. Stern double berth section. Saloon area with 2x bench style cushion seating with backrest and table. Interior carpets. Galley area with sink and lots of storage. Toilet compartment with fitted sea toilet (spare valve set). Fire blanket.

Cockpit: Cockpit steering wheel with engine throttle control. Cockpit lockers with removable fronts and latches.

Electronics: Standard Horizon chart plotter with C-map. Nasa Clipper log and depth gauges with covers (2018). Plastimo compass with cover (2004). Bilge pump with automatic float valve. LED bulbs throughout. 12v socket in cabin.

Machinery: 2004 Yamaha F50 CETL outboard with power trim and tilt. Fuel tank 6 US gallons + fuel line. New cambelt 2022. 2x Full sets of engine, engine lock, hatchway and anchor locker keys. Kill cord. Engine lock.

Trailer: 2 Wheel Admiral trailer 2022 with jockey wheel and winch. NB - the road trailer may not be in serviceable road worthy condition. It is recommended the buyer should inspect and service accordingly prior to use on public roads.

General information

Make:	Macgregor
Model:	26M
Year:	2004
Condition:	Used

Engine

Engine type:	
Fuel type:	Gasoline

Measurements

Length:	7.85 m (25.75 ft)
Beam:	2.36 m (7.74 ft)
Deep:	1.75 m (5.74 ft)
Weight:	0 ()

Accommodation

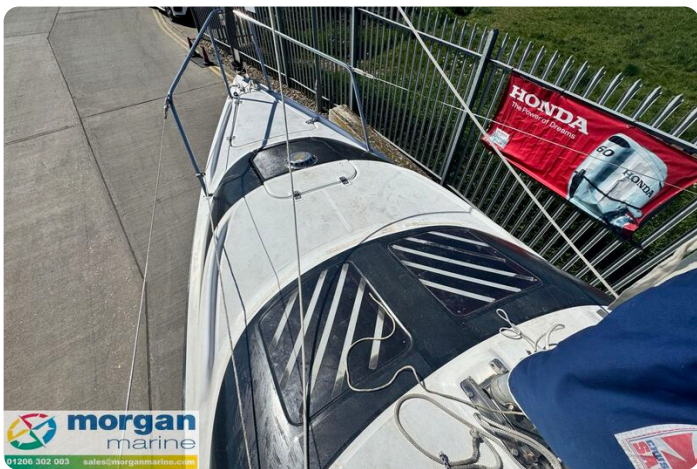
Cabins:	0
Berths:	0

Images













Morgan Marine

The Boatyard, Shipyard Estate
CO7 0AR Colchester
United Kingdom (UK)

Phone: 44(0)1206302003

<https://morganmarine.com>

