



# Jeanneau Merry Fisher 695 Series 2

£59,995 • Brightlingsea United Kingdom (UK) • Used • 2022

## Presented by

Peter Marchant  
Phone: 44(0)1206302003

**Morgan Marine**  
The Boatyard, Shipyard  
Estate  
CO7 0AR Colchester  
United Kingdom (UK)

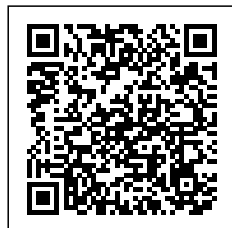


## Details

Make:	Jeanneau
Model:	Merry Fisher 695 Series 2
Year:	2022
Condition:	Used
Engine:	, 300 hp
Engine type:	
Fuel type:	Gasoline
Length:	6.71 m (22.01 ft)
Beam:	2.54 m (8.33 ft)
Cabins:	0
Berths:	0



Morgan Marine



7zea.com

# Description

EN

2022 Jeanneau Merry Fisher 695 Series 2 has just arrived at Morgan Marine, powered by a Honda BF150 outboard and presented in excellent, lightly used condition with only approx 90 hours. This highly sought-after wheelhouse fisher-cruiser is equipped with a fantastic range of upgrades, including an electric windlass, aft cockpit saloon and sundeck layout, a generous forward berth, a luxury galley with fridge, shore power, a marine toilet, and cockpit sun awning, among many other comforts. Recently re-antifouled and full engine service in August 2025! Designed for relaxed cruising, fishing trips, or family days on the water, it offers impressive seating, versatile space, and the capability for enjoyable overnight stays. Clearly cherished by its current owner, this is a rare opportunity to secure a superb example of a very popular model. Early viewing is strongly recommended.

Cabin: Forward cabin with double berth, hatch to deck, storage and overhead light. Separate toilet compartment with toilet and washbasin (with electric pressurised water) and opening portholes.

Cockpit: Wheelhouse with aft sliding door, roof hatch and sliding windows on port and starboard sides. Large glass windscreen with port and starboard windscreen wipers (new blades in 2025) + screen wash. Helm position with bolster pilot seat, dash with full engine controls, electronics and compass. Helm seat folds forward for easy access to starboard side luxury galley - with gas stove, worktop with Arpa black finish, 2x stainless steel glass holders, 42L fridge and sink with electric pressurised water. Port side saloon with table with lockers under seats. Forward facing co-pilot bench seat - converts to seating at table. Wheelhouse interior curtains.

Electronics: Upgraded Garmin ECHOMAP UHD 92sv plotter. Cobra Marine VHF radio. Fusion Audio pack with Bluetooth and speakers. USB plug. 220v shore power socket + battery charger. Wheelhouse light + cabin light. Navigation lights. Compass.

Machinery: Honda BF150 outboard engine with power trim and tilt. Engine lasted serviced in August 2025. Hydraulic steering. Bow thruster. Manual and electric bilge pumps. Fuel capacity: 170L - with outside fill. Water capacity: 50L.

## General information

Make:	Jeanneau
Model:	Merry Fisher 695 Series 2
Year:	2022
Condition:	Used

## Engine

Engine:	, 300 hp
Engine type:	
Fuel type:	Gasoline

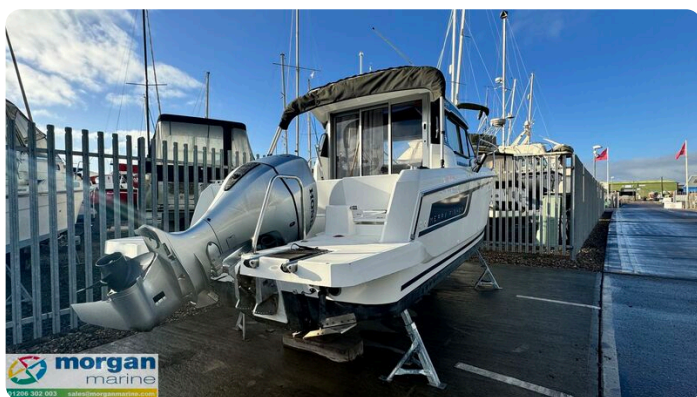
## Measurements

Length:	6.71 m (22.01 ft)
Beam:	2.54 m (8.33 ft)
Deep:	0.5 m (1.64 ft)
Weight:	0 ()

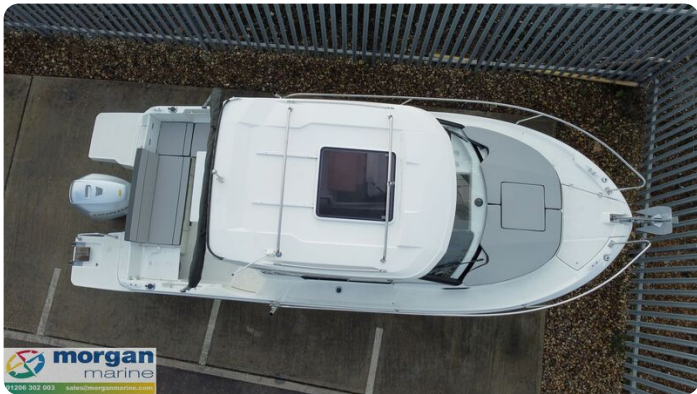
## Accommodation

Cabins:	0
Berths:	0



















**Morgan Marine**

The Boatyard, Shipyard Estate  
CO7 0AR Colchester  
United Kingdom (UK)

Phone: 44(0)1206302003

<https://morganmarine.com>

