



Jeanneau Merry Fisher 655

£29,500 • Brightlingsea United Kingdom (UK) • Used • 2007

Presented by

Peter Marchant
Phone: 44(0)1206302003

Morgan Marine
The Boatyard, Shipyard
Estate
CO7 0AR Colchester
United Kingdom (UK)



Details

| | |
|--------------|-------------------|
| Make: | Jeanneau |
| Model: | Merry Fisher 655 |
| Year: | 2007 |
| Condition: | Used |
| Engine: | , 435 hp |
| Engine type: | |
| Length: | 6.42 m (21.06 ft) |
| Beam: | 2.62 m (8.60 ft) |
| Cabins: | 0 |
| Berths: | 0 |



Morgan Marine



7zea.com

Description

EN

2007 Jeanneau Merry Fisher 655 just in at Morgan Marine - a unique and special boat powered by an Volvo Penta D3-110 inboard diesel upgraded to offer a max speed of 25 knots and a cruise speed of circa 18-20 knots. Propelled by shaft drive with uprated 4 blade propeller. This range of boat was designed to be a versatile day or weekend cruiser, with a larger wheelhouse. Out of the Blue is the desirable later model, and also the highly sought-after optional bathing platform. She is presented in good condition for her age and her packed inventory includes an electric anchor windlass, lithium battery, solar panels & a full cockpit enclosure, so early viewing is highly recommended! - Located in Brightlingsea, Essex Road trailer available via separate negotiation.

Deck: White GRP semi-planning hull . Delta style anchor with chain and rope. Lewmar electric anchor windlass with deck and helm controls. Self draining cockpit. Moulded bathing platform with walk-thru transom and Stainless steel boarding ladder. Flexiteek decks to cockpit sole and bathing platform. Stainless steel pulpit, push pit and grab rails. Two Fishing rod holders. Full aft canopy enclosure. Various ropes and fenders. Dinghy davits. Mooring cleats.

Cabin: 2 berths in forward cabin with approximately 6'1" headroom in the wheelhouse and 5'9" in the cabin. Forward cabin consisting of u-shape seating area which converts to a large double berth, removable table and storage areas. Heads compartment to starboard with an electric marine toilet. Galley to port comprising of a moulded worktop and sink with a pressurising hot & cold water supply, Microwave, and Waeco Coolmatic 40l fridge.

Cockpit: Twin helm seat with excellent all round visibility. Sliding aft wheelhouse door out to the large cockpit with many seating options including cockpit table or a large sunpad. Good access to side decks with ample grab rails and deep gunnels. Cream cockpit cushions and sun pad. Cockpit shower. Two Windscreens wipers. Fire extinguisher. Fire blanket. Emergency tiller.

Electronics: Humminbird fish finder with GPS. Handheld VHF. Navigation lights. 12 volt engine start battery. 12 volt 270AH Lithium Iron battery. Alternator charging. 230 volt shore power system with outlets. Battery charger. Inverter. 2x 80w solar panels. 50w solar panel. Cabin lighting. 12v Socket. Compass. Electric and manual bilge pump. Rev counter, engine temperature, battery and fuel gauges.

Machinery: Volvo Penta D3-110 upgraded inboard diesel with liquid cooled gearbox. Fuel capacity - 120L. Water capacity - 150L. Single lever controls with electric start. Adjustable steering wheel. Shaft drive to fixed 4 bladed propeller.

Trailer: Essex Road trailer available via separate negotiation.

General information

| | |
|------------|------------------|
| Make: | Jeanneau |
| Model: | Merry Fisher 655 |
| Year: | 2007 |
| Condition: | Used |

Engine

| | |
|--------------|----------|
| Engine: | , 435 hp |
| Engine type: | |

Measurements

| | |
|---------|-------------------|
| Length: | 6.42 m (21.06 ft) |
| Beam: | 2.62 m (8.60 ft) |
| Deep: | 0.77 m (2.53 ft) |
| Weight: | 0 () |

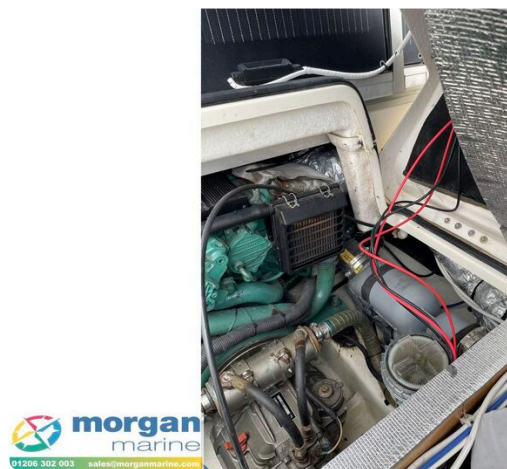
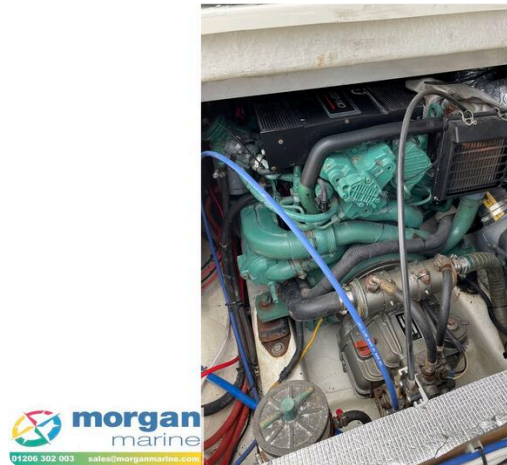
Accommodation

| | |
|---------|---|
| Cabins: | 0 |
| Berths: | 0 |

Images

















Morgan Marine

The Boatyard, Shipyard Estate
CO7 0AR Colchester
United Kingdom (UK)

Phone: 44(0)1206302003

<https://morganmarine.com>

