



# Highfield Sport 520

£24,995 • Essex United Kingdom (UK) • Used • 2021

## Presented by

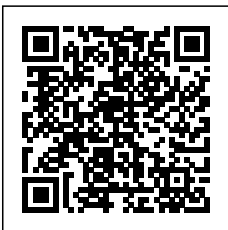
Peter Marchant  
Phone: 44(0)1206302003

**Morgan Marine**  
The Boatyard, Shipyard  
Estate  
CO7 0AR Colchester  
United Kingdom (UK)

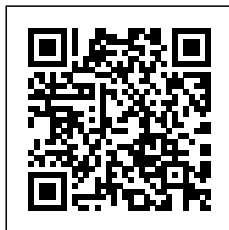


## Details

Make:	Highfield
Model:	Sport 520
Year:	2021
Condition:	Used
Engine type:	
Fuel type:	Gasoline
Length:	5.23 m (17.16 ft)
Beam:	2.46 m (8.07 ft)
Cabins:	0
Berths:	0



Morgan Marine



7zea.com

# Description

EN

2021 Highfield Sport 520 just in at Morgan Marine, Complete with Honda BF100 outboard and Extreme EXT 1100 roller trailer. Offering a brilliant spec with all the options and thrilling performance and superior handling. This is a great rib for all of the family, offering plenty of seating, high equipment level and great performance. This rib cut through the water and offering sublime handling. This Highfield Sport 520 includes a Garmin chartplotter, Garmin VHF radio, Fusion audio system, console with forward seat, swim platform with ladder, overall tailored mooring cover, A-frame, sun deck, PVC tubes and EVA decking. With the impermeable qualities of the aluminium hull, you dont have to worry about gel coats chips, or putting the boat on a trailer or on the beach. Ready to hit the water! - Offering a fantastic combination of performance, durability, and family-friendly features. Dont miss out - contact Morgan Marine today to arrange a viewing!

Deck: PVC tubes. Self-draining deck. High tensile chromated powder coated aluminium hull. Swim platform with ladder. Integrated transom supports. Lifting points and towing eyes. Tow bridle points. Brushed foam teak finish deck. Heavy duty rubbing strake and full length keel guard. Grab handles. Flip up cleats. Overall tailored mooring cover. A-frame. Anchor, chain and rope in bow locker. Bow roller.

Cabin: N/A

Cockpit: Console with forward cushioned seat, grab handles, windscreen. Integrated pilot cushioned bench seating with backrest. Forward bow locker with cushioned seating. Infill bow sunbed cushion.

Electronics: Garmin chart plotter. Fusion audio with speakers. Garmin VHF radio. Honda digital gauge. Navigation lights. Anchor light. Bilge pump. Switch panel. Isolator switch.

Machinery: Honda BF100 Outboard with upgraded stainless steel prop. Internal under-deck fuel tanks Fuel capacity: 105L

Trailer: Extreme 1100 roller trailer with jockey wheel, winch and hitch. NB - the road trailer may not be in serviceable road worthy condition. It is recommended the buyer should inspect and service accordingly prior to use on public roads.

## General information

Make:	Highfield
Model:	Sport 520
Year:	2021
Condition:	Used

## Engine

Engine type:	
Fuel type:	Gasoline

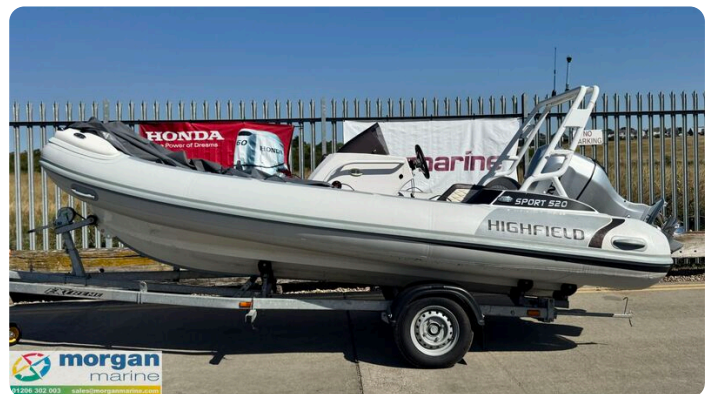
## Measurements

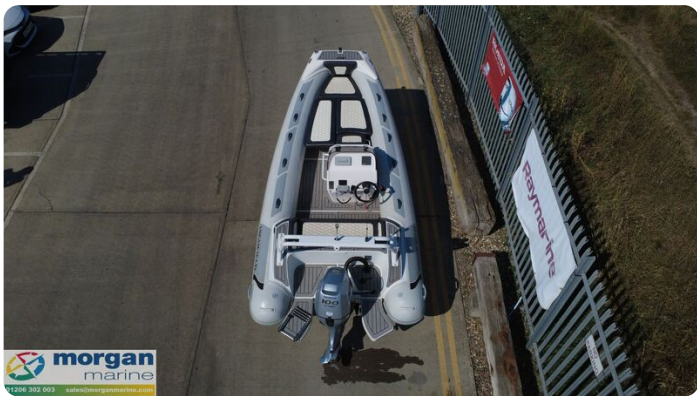
Length:	5.23 m (17.16 ft)
Beam:	2.46 m (8.07 ft)
Deep:	0 m (0.00 ft)
Weight:	0 ()

## Accommodation

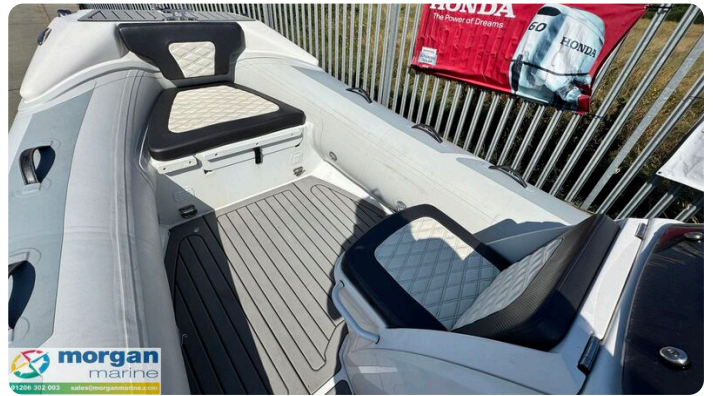
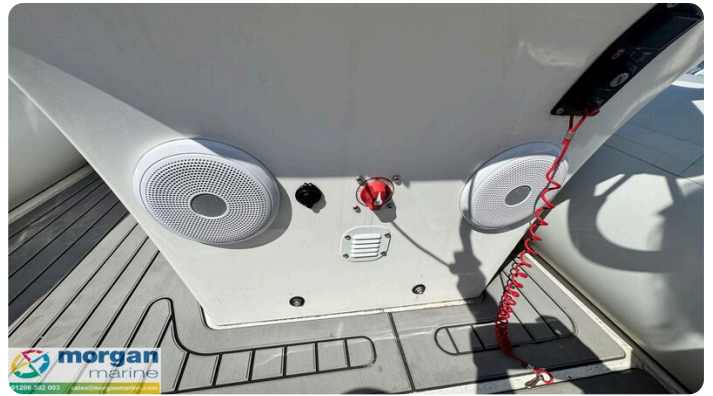
Cabins:	0
Berths:	0

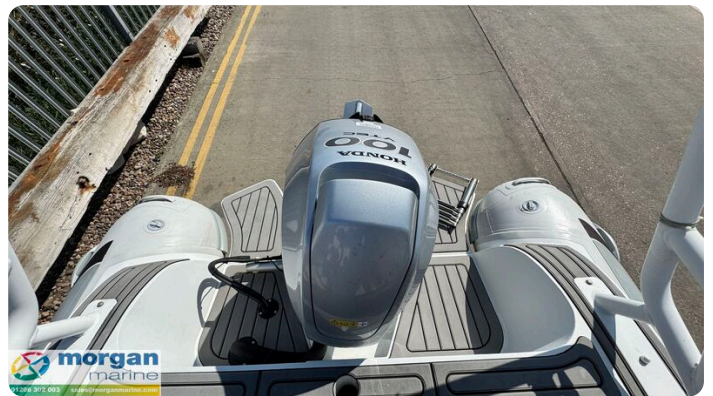
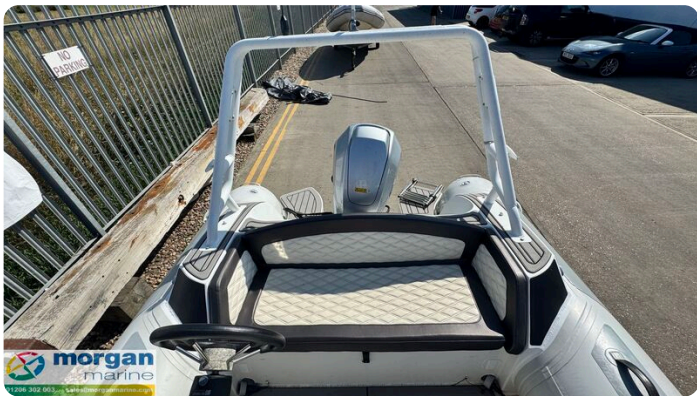
# Images















**Morgan Marine**

The Boatyard, Shipyard Estate  
CO7 0AR Colchester  
United Kingdom (UK)

Phone: 44(0)1206302003

<https://morganmarine.com>

