



# Focus 5X

€1,600,000 • Wanssum Netherlands • New • 2027

## Presented by

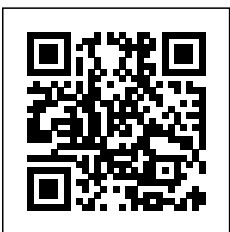
Rok Avsic  
Phone: +31 6 20636812

**GrandYachts BV**  
Geijsterseweg 10  
5861 BL Wanssum  
Netherlands

**GRANDYACHTS®**

## Details

Make:	Focus
Model:	5X
Year:	2027
Condition:	New
Hull:	Fiberglass
Engine:	VOLVO Volvo Penta D11 IPS 950
Engine type:	
Fuel type:	Diesel
Fuel tank:	2500 l (660.43 gal)
Length:	16.5 m (54.13 ft)
Beam:	4.43 m (14.53 ft)
Cabins:	0
Berths:	3
Watertank:	450 l (118.88 gal)



GrandYachts BV



7zea.com

## Description

---

Crafted for those who demand more, the Focus 5X combines refined design, power, and versatility in one striking form, defining the next generation of performance yachts.

### STANDARD EQUIPMENT

#### CUSTOMIZATION

- Entire yacht finished in custom Awlgrip color
- Custom premium marine upholstery for exterior and interior
- Choice of real teak or custom-tone Flexiteek, across deck, side decks, and interior flooring
- Custom selection of interior wood finish and tone
- Custom Isotta steering wheel model, with personalized finish
- Kitchen appliances in custom color (Miele)
- Water taps and fixtures in custom color and finish (Elka Design Milano)

#### DECK

- Carbon-fiber detailing on dashboard and wet-bar
- Flush-mounted deck fittings for a clean, uncluttered look
- Integrated LED deck lighting for evening ambiance
- Cockpit and foredeck sunshades with carbon-fiber poles

- Tailored deck rain covers

#### INTERIOR

- Meticulously crafted joinery with refined detailing and soft-close cabinetry
- Adjustable ambient LED lighting with custom scene modes
- Premium bedding sets, embroidered with the yacht's logo
- Panoramic hull windows for abundant natural light
- Fully equipped galley with marine tableware
- Acoustic insulation and concealed air-conditioning vents for quiet comfort
- Hidden storage and power outlets for a clean, minimalist interior

#### MECHANICAL SYSTEMS

- Hydraulic hardtop windows
- Hydraulic dinghy garage
- Transformer hydraulic swim platform
- Electric glass roof
- Diesel generator 6kVA (WhisperPower Piccolo 6)
- Bow and stern thrusters for precision maneuvering (Vetus)
- Active trim stabilization (Humphree)
- Dual air conditioning system (32.000 BTU)

- Stainless steel black and grey-water tanks, with automatic discharge control

## NAVIGATION & ELECTRONICS

- GPS: 2 X Garmin 16", + 1 X Garmin 15" ultrawide screens
- VHF: Simrad NAIS 500, AIS with antenna
- Autopilot
- Parking camera system
- Wireless remote control for anchor, thrusters, and platform
- Inverter
- Underwater LED lights (4 on stern)
- JL Audio premium sound system (10 speakers + 2 subwoofers)

## OPTIONAL EQUIPMENT

### ENGINES:

- 2 x Volvo Penta D11 IPS 950 (pod drives)
- 2 x MAN I6 850 (shaft drives)

### MECHANICAL SYSTEMS

- Convertible deck layout
- Diesel generator upgrade 15kVA (WhisperPower Piccolo 15)
- Watermaker (Schenker Smart 100)
- Gyro stabiliser
- Additional 16.000 BTU

airconditioning system in cockpit

## NAVIGATION & ELECTRONICS

- Garmin 360 Surround view camera system
- Nightvision camera (Syonix)
- Radar (Garmin)
- Underwater LED lights upgrade: 5 on stern + 2 on each side
- JD Audio signature-series upgrade (16 speakers + 2 subwoofers)
- Starlink internet antenna

## WATER TOYS

- Integrated Jet Ski mount
- Williams Turbojet 285 tender
- Awake board (Ravic S) with integrated storage, incl. charger
- Seabob F9S, with integrated storage, incl. charger

## MISCELLANEOUS

- Custom Winter cover

Steering System  
Joystick Control  
Disclaimer

Focus Marine Center offers the details of this vessel in good faith but cannot guarantee or warrant the accuracy of this information nor warrant the condition of the vessel. A buyer should instruct his agents, or his surveyors, to investigate such details as the buyer desires validated. This vessel is offered subject to prior sale, price change, or withdrawal without notice.

## General information

Make:	Focus
Model:	5X
Year:	2027
Condition:	New
Hull:	Fiberglass

## Engine

Engine:	VOLVO Volvo Penta D11 IPS 950
Engine type:	
Fuel type:	Diesel
Fuel tank:	2500 l (660.43 gal)

## Measurements

Length:	16.5 m (54.13 ft)
Beam:	4.43 m (14.53 ft)
Deep:	1.1 m (3.61 ft)

## Accommodation

Cabins:	0
Berths:	3
Watertank:	450 l (118.88 gal)

## Images

---



Focus 5X



Focus 5X



Focus 5X



Focus 5X



Focus 5X



Focus 5X



Focus 5X



Focus 5X



Focus 5X



Focus 5X



Focus 5X



Focus 5X



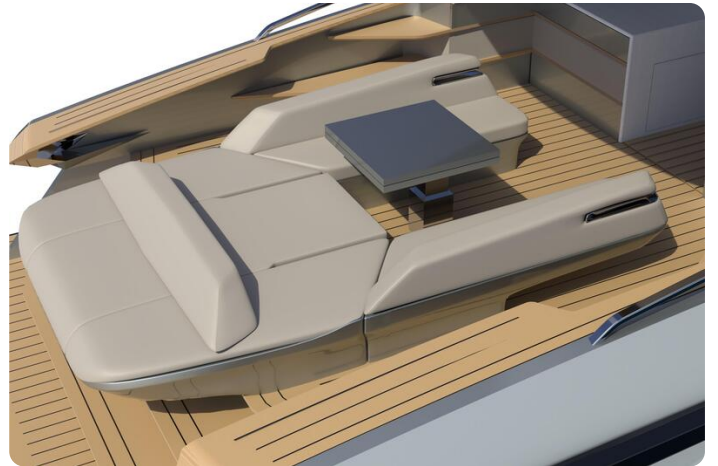
Focus 5X



Focus 5X



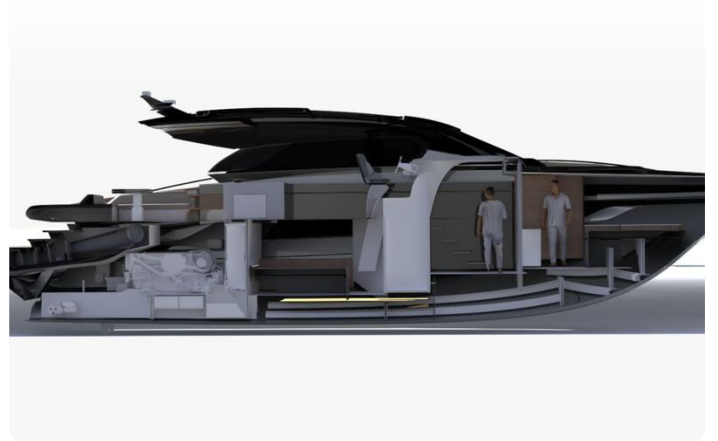
Focus 5X



Focus 5X



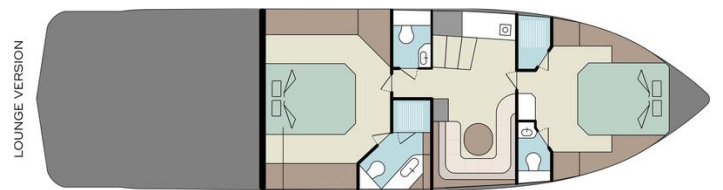
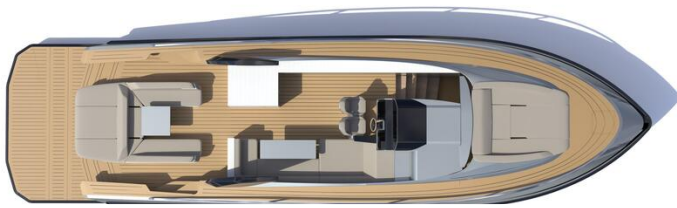
Focus 5X



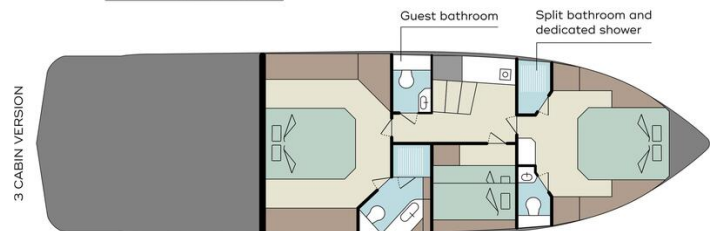
Focus 5X



Focus 5X



Full width master cabin with 2.30 meter (75 ft) long bed



Focus 5X

**GrandYachts BV**

Geijsterseweg 10  
5861 BL Wanssum  
Netherlands

Phone: +31 6 20636812

<https://grandyachts.eu>



**GRANDYACHTS®**