



FASHION 68 HARD TOP

€730,000 • Dalmatia Croatia • Used • 2008

Presented by

Olivier Haroche
Phone: +34 637 510 716

Barcelona Yachting
Port Olimpic - Local 14
08005 Barcelona
Spain

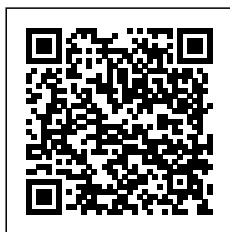


Details

| | |
|--------------|-------------------|
| Make: | FASHION |
| Model: | 68 HARD TOP |
| Year: | 2008 |
| Condition: | Used |
| Engine: | MTU 1550, 1550 hp |
| Engine type: | |
| Fuel type: | Diesel |
| Length: | 21.8 m (71.52 ft) |
| Beam: | 5.45 m (17.88 ft) |
| Cabins: | 0 |
| Berths: | 0 |



Barcelona
Yachting



7zea.com

Description

FR
FASHION 68 HARD TOP 2008, mis à l'eau en 2009. 2nd main.
Prix TTC, Pavillon Croate

Faire offre !

Électronique

TV, radar, haut-parleurs de cockpit, compas, pilote automatique, lecteur DVD, GPS, sondeur, loch/speedomètre, radio VHF

Électricité

Générateur, prise de quai, onduleur

Équipement du pont

Passavants en teck, Cockpit en teck, Coussins de cockpit, Table de cockpit, Douche de cockpit, Echelle de bain.

Confort / Intérieurs

Congélateur, Eau chaude, WC électrique, Climatisation, Pompe de cale électrique, Chauffage, Lave-vaisselle, Four, Réfrigérateur, Pompe de cale manuelle, Chargeur de batterie.

PDF sur demande

Visite sur rendez-vous.

EN
FASHION 68 HARD TOP 2008, launched in 2009. 2nd hand.
Price with VAT included, Flag of Croatia

Electronic

TV, Radar, Cockpit Speakers, Compass, Autopilot, DVD Player, GPS, Depth Sounder, Log/Speedometer, VHF Radio

electricity

Generator, grounding, inverter

deck equipment

Teak Side Decks, Teak Cockpit, Cockpit Cushions, Cockpit Table, Cockpit Shower, Bathing Ladder

Comfort / Interiors

Freezer, Hot water, Electric toilet, Air conditioning, Electric bilge pump, Heating, Dishwasher, Oven, Refrigerator, Manual bilge pump, Battery charger

Request PDF.

Visit by appointment

ES
FASHION 68 HARD TOP 2008, botado en 2009. Segunda mano.
Precio IVA incluido, bandera croata.

Electrónica TV, radar, altavoces de cabina, brújula, piloto automático, reproductor de DVD, GPS, sonda, velocímetro, radio VHF.

Electricidad Generador, toma de puerto, inversor.

Equipamiento de cubierta Cubierta lateral de teca, cabina de teca, cojines de cabina, mesa de cabina, ducha de cubierta, escalera de baño.

Comodidad/Interior Congelador, agua caliente, WC eléctrico, aire acondicionado, bomba de achique eléctrica, calefacción, lavavajillas, horno, refrigerador, bomba de achique manual, cargador de batería.

PDF bajo demanda.

Visita con cita previa.

General information

| | |
|------------|-------------|
| Make: | FASHION |
| Model: | 68 HARD TOP |
| Year: | 2008 |
| Condition: | Used |

Engine

| | |
|--------------|-------------------|
| Engine: | MTU 1550, 1550 hp |
| Engine type: | |
| Fuel type: | Diesel |

Measurements

| | |
|---------|-------------------|
| Length: | 21.8 m (71.52 ft) |
| Beam: | 5.45 m (17.88 ft) |
| Deep: | 1.4 m (4.59 ft) |
| Weight: | 0 kg (0.00 lb) |

Accommodation

| | |
|---------|---|
| Cabins: | 0 |
| Berths: | 0 |

Images





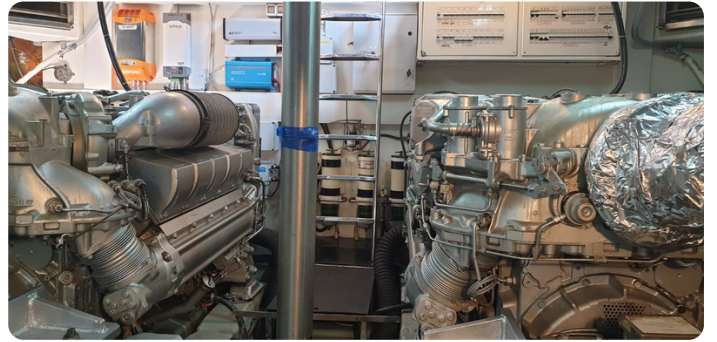
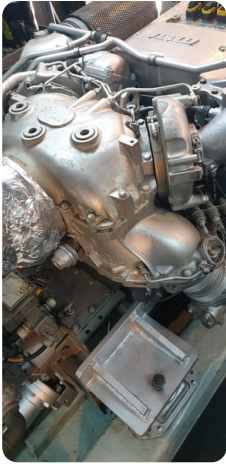


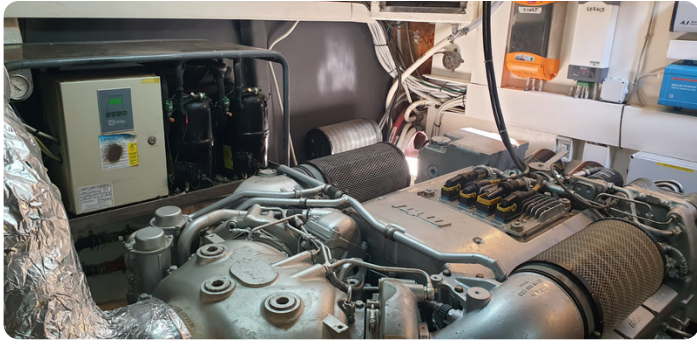


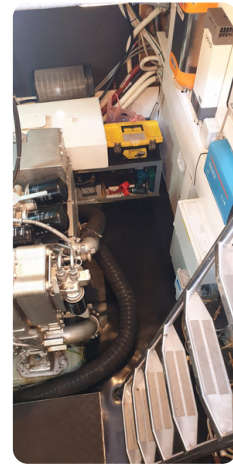
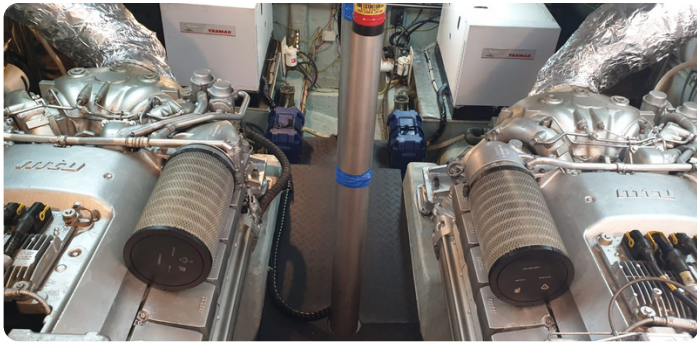








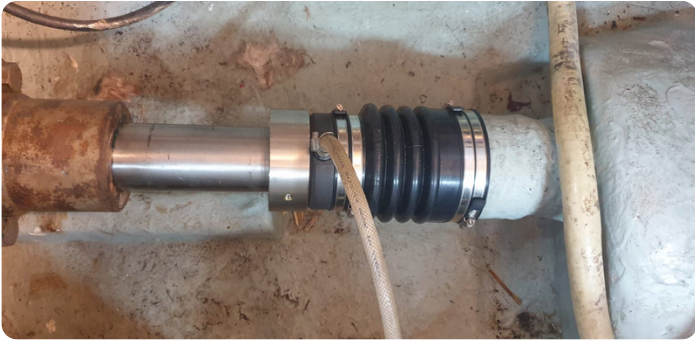
















Barcelona Yachting

Port Olímpic - Local 14

08005 Barcelona

Spain

Phone: +34 637 510 716

<https://www.barcelonayachting.com/>

