



# Fairline Targa 52

£299,950 • Weymouth United Kingdom (UK) • Used • 2005

## Presented by

Justin Garwell  
Phone: +44 (0) 1305 766504

**JD YACHTS LIMITED**  
80 THE ESPLANADE  
DT4 7AA WEYMOUTH  
United Kingdom (UK)



## Details

Make:	Fairline
Model:	Targa 52
Year:	2005
Condition:	Used
Engine:	Volvo Penta D12-715, 715 hp
Engine type:	
Fuel type:	Diesel
Length:	16.22 m (53.22 ft)
Beam:	4.27 m (14.01 ft)
Cabins:	0
Berths:	0



JD YACHTS  
LIMITED



7zea.com

# Description

ENG  
2005. 2 x 715 HP Volvo Penta D12-715  
4 berths in 2 cabins  
Lying: Weymouth UK

ENG  
Extras

Raymarine gS-Series MFD Chartplotter  
Raymarine Raydome  
Raymarine p70Rs Autopilot Head Unit  
Raymarine i70s MFD  
iCOM VHF  
Bow & Stern Thrusters  
Hydronautica Yacht Controller  
Onan 13.5kVA Generator  
Reverse Cycle Air Conditioning  
Eberspacher Diesel Heating  
Bespoke Hardtop Windows  
Lifting TV to Cockpit  
Lifting TV to Saloon  
Passerelle  
Holding Tank

Standard Specification

Hullform And Construction

All gel coat and glass fibre hand laid with unidirectional, biaxial and woven rovings Antifouling protection to hull  
Deep 'V' forward; 20° deadrise aft  
Designed by Bernard Olesinski and the Fairline design team  
Full length moulded spray deflectors  
Hull/deck join bolted and bonded  
Integrally moulded engine bearers  
Isophthalic gel coat backed by isophthalic resin-rich powder-bound glass mat  
The deck incorporates polyurethane foam cores for high strength and excellent thermal insulation  
The integral bathing platform gives the boat a longer waterline length for improved performance, particularly at reduced power settings  
The propellers are set in semi-tunnels enabling the engines to be located further aft, also reducing draught and improving efficiency by reducing the shaft angle  
Transverse and longitudinal strengthening stringers throughout hull

Deck

Anchor chain locker  
Anchor winch (electric)  
Anchor winch controls  
Calibrated anchor chain  
Concealed telescopic swim ladder to bathing platform  
Full set of IMCO navigation lights  
Garage with winch system for concealed stowage of optional Jet RIB or PWC beneath aft sundeck  
Hot and cold water transom shower  
Life raft stowage  
Moulded non-slip deck surface  
Recessed self-draining area on foredeck with coachroof sun cushions  
'Reticulated' non-absorbent foam cushions for forward and aft sundeck  
Remote control searchlight  
Riding light  
Rubbing strake  
Self-stowing through-hull Delta® anchor

Stainless steel bow fairlead(s)  
Stainless steel bow, spring and stern cleats  
Stainless steel handrails  
Stainless steel hull protection plate under bow  
Stainless steel pulpit  
Teak-laid bathing platform  
Toughened glass curved windscreen  
Transom gate from cockpit to integral bathing platform  
Twin horns  
Water filler(s)  
Windscreen washers  
Windscreen wipers

Helm Position

12v socket  
Adjustable/tilt steering wheel  
Bilge pump switches with integral operating warning lights and audible alarms  
Bolstered helm seat(s)  
Bowthruster controls  
Chart table and light  
Controls for engine bay fire extinguisher system  
Drinks holders  
Echosounder and speedometer/distance log repeater(s) with sea water temperature read out  
Electronic single-lever throttle and gear controls  
Folding foot plinth  
Fuel gauges  
Full engine instrumentation including; tachometers, oil pressure gauges, temperature gauges, battery condition indicators, audible alarms and engine hour meters  
GPS chartplotter interfaced with autopilot  
Helm position indicator  
High speed magnetic compass  
Powered steering  
Raymarine E120 navigation display  
Remote anchor winch controls  
Searchlight controls  
Trim tab controls  
VHF radio telephone  
Waterproof switches for navigation and riding lights, windscreen wipers and engine bay extractor fan(s)

Cockpit

12v heavy duty weatherproof socket  
Access via transom deck to port and starboard side decks  
Aft cockpit hood with clear panels and zipped doorway  
Bathing platform lights  
Central dining area  
Cockpit bar with refrigerator, sink, hot and cold water, insulated coolbox  
Companion seating to helm  
Drinks holders  
Engine bay access hatch with stainless steel pneumatic support struts, independent of the tender garage  
Fender stowage  
Glove locker  
Manual bilge pump(s)  
Refrigerated coolbox to cockpit bar  
Stainless steel handrails  
Stowage lockers under cockpit seats  
Teak-laid floor throughout self-draining cockpit  
Warning light and audible alarm during garage door operation  
Warp lockers

Main Saloon

Access to day heads  
Aerial and connections for television  
Bar unit

Control panel for 12v/24v/240v domestic electrical circuits  
 Cocktail table converts to dining table with additional stools  
 Deck hatch with flyscreen and blind  
 DVD/CD/radio with 2 speakers in saloon and 2 waterproof speakers in cockpit  
 Full-height standing headroom  
 Handrail  
 Halogen ceiling lights  
 LCD TV  
 Lockers (overhead)  
 Mood lighting  
 Sliding door to cockpit with integral blind system  
 Sofa  
 Stainless steel opening porthole(s) with flyscreen  
 Stowage lockers under dinette seating  
 Underfloor stowage hold

#### Galley

Crockery stowage  
 Electric ceramic/halogen hob  
 Extractor fan  
 Work surface with covers  
 Halogen ceiling lights  
 Integrated waste bin  
 Lacquered cupboard doors  
 Lockers (overhead)  
 Microwave oven  
 Random teak floor  
 Refrigerator 4.6cu.ft. (130L) with automatic 12v/240v change-over  
 Stainless steel opening porthole(s) with flyscreen  
 Twin sinks with hot and cold mixer tap  
 Towel rail  
 Work surface lights

#### Master Cabin

Access to en suite bathroom  
 Bedside stowage  
 Drawer(s) under bed  
 Dressing table with vanity stowage  
 Full-height standing headroom  
 Halogen ceiling lights  
 Large hatch with flyscreen and concealed blinds to foredeck  
 Lockers (overhead)  
 Mirror  
 Moulded stowage locker under hinged bedboard  
 Oversized double bed  
 Stainless steel opening porthole(s) with flyscreen  
 Upholstered bedhead  
 Wardrobe(s)

#### Master En Suite Bathroom

220v/240v shaving point  
 Automatic shower tray pump-out system  
 Electric silent-flush freshwater toilet  
 Extractor fan  
 Avonite® vanity unit locker and basin with hot and cold pressurised water  
 Full standing height circular shower with rotating screen  
 Halogen ceiling lights  
 Mirror  
 Stainless steel opening porthole(s) with flyscreen

#### Starboard Guest Cabin

Bedside stowage  
 Drawer(s) under bed  
 Full length berths x 2  
 Halogen ceiling lights  
 Mirror  
 Stainless steel opening porthole(s) with flyscreen  
 Upholstered bedheads  
 Wardrobe(s)

#### Port Guest Cabin

Bedside stowage  
 Drawer(s) under bed  
 Full length berths x 2  
 Halogen ceiling lights  
 Mirror  
 Stainless steel opening porthole(s) with flyscreen  
 Upholstered bedheads  
 Wardrobe(s)

#### Shower/wc Compartment

220v/240v shaving point  
 Automatic shower tray pump-out system  
 Electric silent-flush freshwater toilet  
 Avonite® vanity unit locker and basin with hot and cold pressurised water  
 Full set of bathroom fittings  
 Full standing height circular shower with rotating screen  
 Mirror  
 Stainless steel opening porthole(s) with flyscreen

#### Electrical Systems

All 240v, 24v and 12v circuits (where applicable) protected by circuit breakers with main electrical load control panel  
 Electrical sockets  
 Heavy duty circuit breakers  
 Isolating switches to all batteries  
 Onan generator 7kVA  
 24 Volt:  
 Batteries - 2 x 180Ah exclusively for starboard engine starting  
 Batteries - 4 x 180Ah wired in parallel supplying domestic services and port engine starting  
 Circuit breaker 80amp for anchor winch  
 Circuit breaker for bowthrustrer 300amp  
 Emergency battery coupling system permits each engine to start from opposite engine battery bank  
 240 Volt:  
 Polarity check and earth leakage protection system  
 Regulated 75amp charger for domestic batteries

#### Engines And Sterngear

Aerodynamically designed engine air intakes  
 Automatic bilge pumps for forward bilge, engine bay and rudder bay with manual 'on' override  
 Automatic engine bay fire extinguisher system  
 Balanced rudders  
 Cathodic protection  
 Dripless shaft seals  
 Electro-hydraulic trim tabs with cathodic protection  
 Engine room soundproofing  
 Electric engine bay fan(s)  
 Engine bay lights  
 Exhaust overheat warning system  
 High capacity emergency manual bilge pump system with changeover valves  
 Manganese bronze 'P' brackets  
 Manganese bronze propellers contra-rotating  
 Sea cocks on all inlets/outlets below waterline  
 Stainless steel alloy shafts  
 Water cooled through-hull engine silencers

#### Fuel System

Changeover valve system to permit each engine to draw fuel from, and return fuel to, either tank  
 Emergency fuel shut-off valves  
 High capacity water separators and fuel filters  
 Individual fillers and vents to port and starboard  
 Marine grade alloy fuel tanks x 2

#### Freshwater System

Automatic, pressurised supply  
Calorifier hot water system  
Water tank(s)

General information

Make:	Fairline
Model:	Targa 52
Year:	2005
Condition:	Used

Engine

Engine:	Volvo Penta D12-715, 715 hp
Engine type:	
Fuel type:	Diesel

Measurements

Length:	16.22 m (53.22 ft)
Beam:	4.27 m (14.01 ft)
Deep:	1.09 m (3.58 ft)
Weight:	16450 ( )

Accommodation

Cabins:	0
Berths:	0

Images



Image courtesy of JD Yachts



Image courtesy of JD Yachts





Image courtesy of JD Yachts



Image courtesy of JD Yachts



Image courtesy of JD Yachts



Image courtesy of JD Yachts



Image courtesy of JD Yachts



Image courtesy of JD Yachts





Image courtesy of JD Yachts



Image courtesy of JD Yachts



Image courtesy of JD Yachts



Image courtesy of JD Yachts



Image courtesy of JD Yachts



Image courtesy of JD Yachts





Image courtesy of JD Yachts



Image courtesy of JD Yachts



Image courtesy of JD Yachts



Image courtesy of JD Yachts



Image courtesy of JD Yachts



Image courtesy of JD Yachts





Image courtesy of JD Yachts



Image courtesy of JD Yachts



Image courtesy of JD Yachts



Image courtesy of JD Yachts

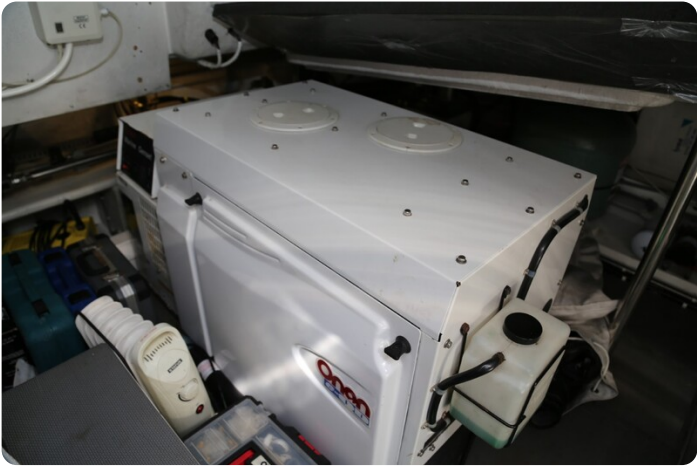


Image courtesy of JD Yachts



**JD YACHTS LIMITED**

80 THE ESPLANADE

DT4 7AA WEYMOUTH

United Kingdom (UK)

Phone: +44 (0) 1305 766504

<http://jdyachts.com>



The logo for JD Yachts, featuring a stylized orange 'J' followed by the word 'YACHTS.' in white, all set against a solid black rectangular background.