



# 5.8m Fishing boat

£6,995 • Brightlingsea United Kingdom (UK) • Used • 0

**Presented by**  
Peter Marchant  
Phone: 44(0)1206302003  
**Morgan Marine**  
The Boatyard, Shipyard  
Estate  
CO7 0AR Colchester  
United Kingdom (UK)

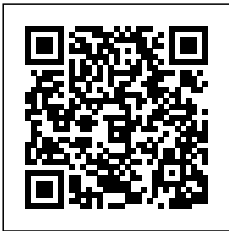


## Details

|              |                  |
|--------------|------------------|
| Make:        | 5.8m             |
| Model:       | Fishing boat     |
| Year:        | 0                |
| Condition:   | Used             |
| Engine:      | , 300 hp         |
| Engine type: |                  |
| Fuel type:   | Diesel           |
| Length:      | 5.8 m (19.03 ft) |
| Beam:        | 2.2 m (7.22 ft)  |
| Cabins:      | 0                |
| Berths:      | 0                |



Morgan Marine



7zea.com

## Description

EN

5.8m Fishing boat in at Morgan Marine, which we are to believe is a Puffin build. Powered by a Volvo Penta MD2020D three-cylinder diesel engine which has had a recent replacement gearbox. This boat is a perfect open wheelhouse style of boat which can be converted into a closed cuddy version with its removable doors. With a large open cockpit area with integrated seating, this boat is perfect for days out on the water fishing or just rides up and down the river. Contact Morgan Marine today for viewings!

Cabin: V - shaped cuddy with removable wheelhouse doors to make closed off compartment. Storage lockers.

Cockpit: Open cockpit with U-shaped cockpit seating with lockers. Port side helm position with steering wheel, windscreen and dash with engine controls.

Electronics: Cobra GPS VHF radio. Bilge pump. Solar panel on roof. USB socket. Ritchie compass. Engine gauges ( RPM, temperature and voltage). NB - Electronics not tested.

Machinery: Volvo Penta MD2020D three-cylinder, 19 horsepower marine diesel engine. Hydraulic steering. Recent replacement gearbox.

### General information

|            |              |
|------------|--------------|
| Make:      | 5.8m         |
| Model:     | Fishing boat |
| Year:      | 0            |
| Condition: | Used         |

### Engine

|              |          |
|--------------|----------|
| Engine:      | , 300 hp |
| Engine type: |          |
| Fuel type:   | Diesel   |

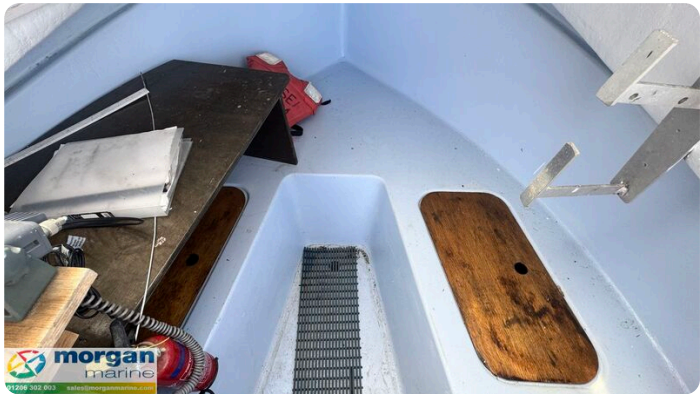
### Measurements

|         |                  |
|---------|------------------|
| Length: | 5.8 m (19.03 ft) |
| Beam:   | 2.2 m (7.22 ft)  |
| Deep:   | 0.6 m (1.97 ft)  |
| Weight: | 0 ( )            |

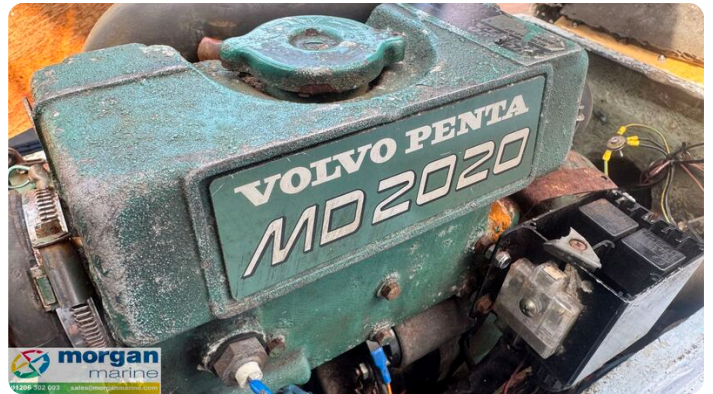
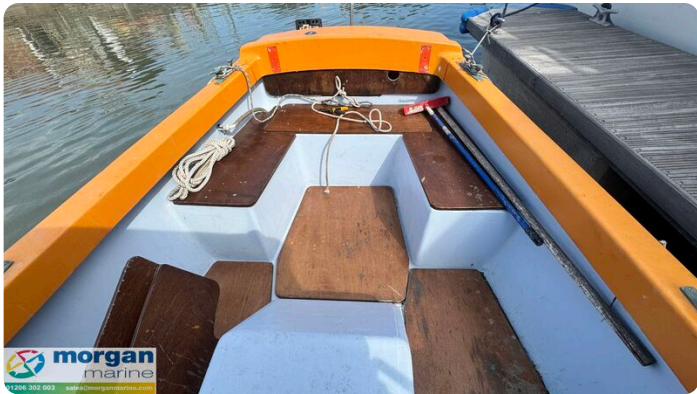
### Accommodation

|         |   |
|---------|---|
| Cabins: | 0 |
| Berths: | 0 |

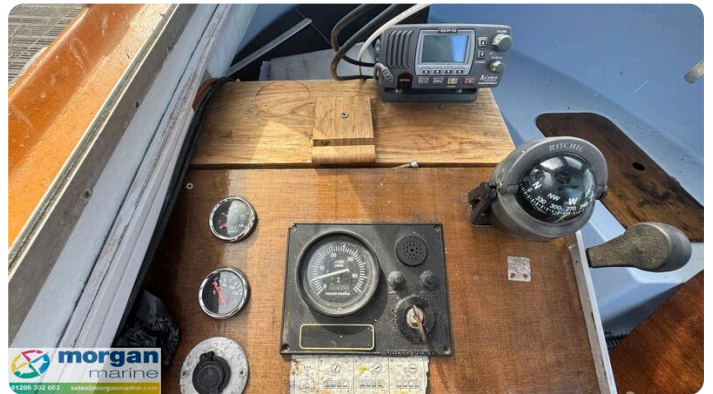
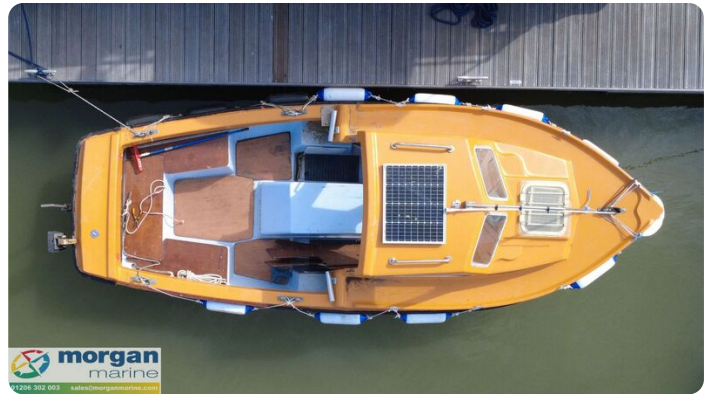
## Images











**Morgan Marine**

The Boatyard, Shipyard Estate  
CO7 0AR Colchester  
United Kingdom (UK)

Phone: 44(0)1206302003

<https://morganmarine.com>

